

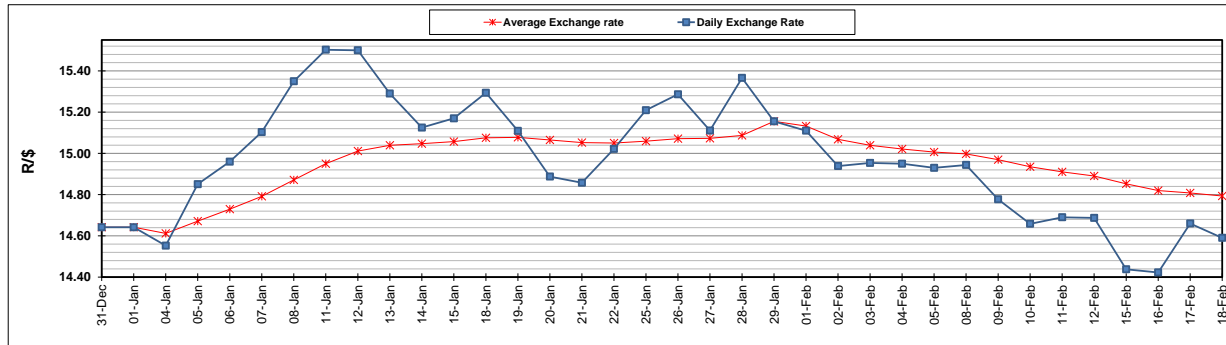
	PETROL 95 ULP	PETROL 93 ULP & LRP	DIESEL 0.05%	DIESEL 0.005%	ILL. PAR.
GAUTENG PUMP PRICE (SA c/l) AS FROM 03/02/2021	1,567.000	1,550.000	-	-	-
WHOLESALE PRICE (SA c/l) AS FROM 03/02/2021	-	-	1,358.420	1,360.820	798.688
SINGLE NATIONAL MAXIMUM RETAIL PRICE	-	-	-	-	1,008.000
BASIC FUEL PRICE - 18/02/2021 (SA c/l)	676.875	666.860	666.635	670.032	643.361
PRESS RELEASE CONTRIBUTION TO BFP 03/02/2021 - 18/02/2021 (SA c/l)	600.170	593.170	599.630	602.030	586.128
UNIT OVER/(UNDER) RECOVERY - 18/02/2021 (SA c/l)	(76.705)	(73.690)	(67.005)	(68.002)	(57.233)
AVERAGE BASIC FUEL PRICE 29/01/2021 - 18/02/2021	641.308	632.663	636.008	639.685	616.597
AVERAGE UNIT OVER/(UNDER) RECOVERY 29/01/2021 - 18/02/2021	(57.338)	(55.693)	(47.978)	(49.455)	(42.269)

ANALYSIS MOVEMENT OF AVERAGE OVER/(UNDER) RECOVERY

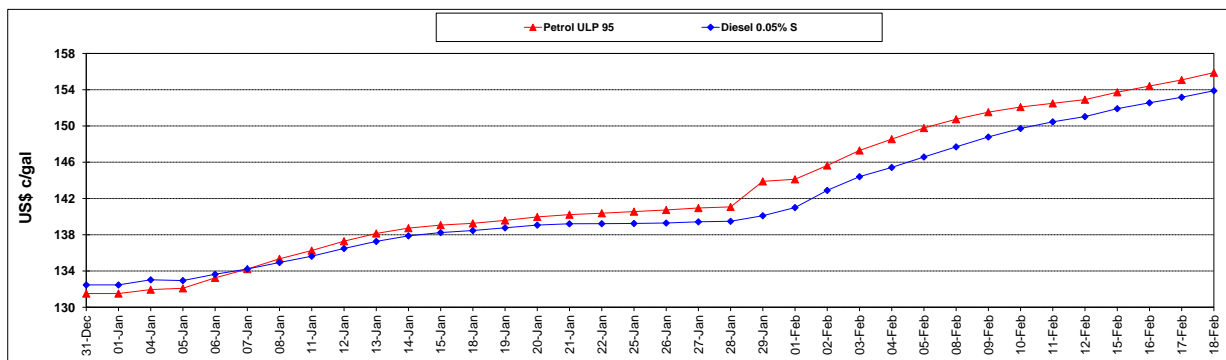
	PETROL 95	PETROL 93	DIESEL 0.05%	DIESEL 0.005%	ILL. PAR.
- MOVEMENT IN INTERNATIONAL PRODUCT PRICES	(70.066)	(68.249)	(60.600)	(62.150)	(54.506)
- MOVEMENT IN EXCHANGE RATE	12.728	12.556	12.622	12.695	12.237
AVERAGE UNIT OVER/(UNDER) RECOVERY 29/01/2021 - 18/02/2021	(57.338)	(55.693)	(47.978)	(49.455)	(42.269)

R/\$ EXCHANGE RATE - (R/\$14.5903 - 18/02/2021)

EXCHANGE RATE USED IN BASIC FUEL PRICE



INTERNATIONAL PRODUCT PRICES OF BASKET USED IN BASIC FUEL PRICE



BASIC FUEL PRICE IN SA CENTS PER LITRE

